

Rockwalls and Waterfalls

Volume #47

Autumn Newsletter 2011

Spiral Tunnels Model Update

The Friends of Yoho contracted Prime Solutions in Calgary, Alberta to build a completely animated working train model of the Historic Spiral Tunnels to be installed in the Yoho Visitor Centre. This model of the tunnels will provide an opportunity to educate visitors of the significance of railway heritage, both locally and nationally. We received generous funding for this project through Parks Canada's Contribution Funding, the Columbia-Kootenay Cultural Alliance, Canadian Pacific, the residents of Field who supported our annual spaghetti dinner and silent auction in 2010 and through sales in our Friends' gift shop.



Model in progress



Jered showing Karla progress of the model

It has been an exciting project to work on, and in the Spring of 2012 it will be installed in the Yoho National Park Visitor Centre. We hope some of our members will be able to join us for the official ribbon cutting that will take place shortly after the installation.

Board Members 2011/12

Karla Gaffney - President
John Schlichting - Vice President
Helen Barry - Secretary/Treasurer
Sally Watson - board member
Mike Finn - board member

Deb Bancroft - General Manager
Janice Morrison - Assistant Manager
Amy McKenzie - Sales Associate

"I go to nature to be soothed and healed, and to have my senses put in order."

- John Burroughs



Friends of Yoho 18th Annual Spaghetti Dinner & Silent Auction

Sunday, November 6, 2011
Field Community Centre
Everyone Welcome


doors open at 5:30 pm (time changes this Sunday)

www.friendsofyoho.ca

This page was created using **Nitro PDF** trial software.

To purchase, go to <http://www.nitropdf.com/>

Winner of the Yoho and Glacier 125 km Hike Challenge




Yoho and Glacier 125KM Hike Challenge!

Stop by the Friends of Yoho Gift Shop in the Field Visitor Centre or the Friends of Mount Revelstoke and Glacier at the Glacier Circle Bookstore in the Rogers Pass Discovery Centre and pick up your booklet to record your hikes! Bring back your completed log book and receive a limited edition pin! After completing the hike challenge your name will be entered to win one of two fabulous prizes!

Deadline October 10, 2011

WIN!

A trip for two adults to Nakimu Caves in Glacier National Park
or
A Guided hike for two adults to the Burgess Shale Fossil Beds in Yoho National Park



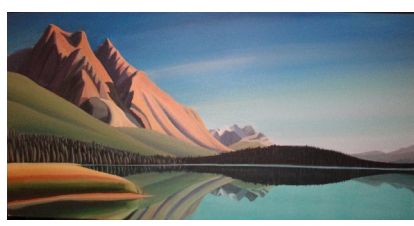
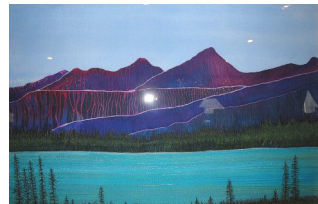
This summer the Friends of Yoho and Glacier National Parks helped celebrate their Parks 125th year anniversaries with a challenge to hike 125 kilometers in their parks. Upon completion of the 125 kilometers participants received a limited edition 125 commemorative pin and their name was entered in a draw to win one of two prizes. Mark Douglas of Langley, B.C. was the winner of the guided hike for two to the Burgess Shale Fossil Beds in Yoho National Park. The guided hike was generously donated by the Burgess Shale Geoscience Foundation.

Mark and his hiking companion hiked throughout Yoho, from Mt. Hunter, Wapta Falls and Hoodoos in the west, to the Emerald triangle, Yoho Valley and Lake O'Hara areas in the east. Upon hearing of his win

Mark commented, *"That is fantastic news! The challenge really caused us to experience more fully the grandeur of Yoho Park. Sounds like we are returning this coming year!"*

The hike to the Nakimu Caves in Glacier National Park was won by Garry Molitwenik from Vernon, B.C. Congratulations to both of our hikers. Enjoy your hikes in 2012!

Art in the Park

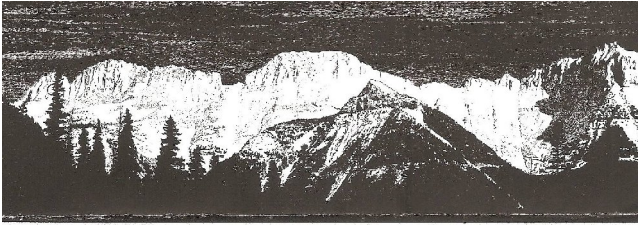


Artists from the Revelstoke area took part in an Art in the Park initiative held in both Glacier/Mt. Revelstoke and Yoho National Parks. The Friends of Yoho contributed \$1500. to the program. Artists spent a long weekend in the Yoho Valley and have produced pictures of the Emerald Lake and Yoho Valley areas. The pictures were debuted at the closing dinner of our 125 celebrations and have been on display at the Field Visitor Centre for the month of October. On November 12 the pictures will be displayed for a month at an art gallery in Revelstoke, after which they will be on tour for a year. For our contribution the Friends have the exclusive rights to one picture from each artist for the next three years.

"In every walk with nature,
one receives far more
than he seeks."
- John Muir

www.friendsofyoho.ca

This page was created using **Nitro PDF** trial software.
 To purchase, go to <http://www.nitropdf.com/>



A Winter Ski Adventure in the Yoho

Dave Downey

In a winter during the 1960's Loren Kreck and I went with three college students, Dick Reiman, Bill Bratt and Bill Russan, on a ski-touring trip in Yoho National Park in British Columbia, Canada. The park is located west of Lake Louise. Our plan was to go to the Twin Falls Cabin and then climb Mt. Des Poilus, the highest peak in the President Range.



David W. Downey
1125 Sunnyside Dr.
Kalistpell, MT 59901-7490

David W. Downey, Kalispell, Montana 59901, Telephone (406) 766-6699

257-4311
9/25/10

Hello Kathryn:

Here is the story about our trip to the yoho a long time ago. You have great mountains, great parks and great people.

Sincerely,

Dave Downey

We skied a snow-covered road for several miles and then a trail for a total of about twelve miles. We had heavy packs for winter camping and when we lost our balance while traversing the side hills we took some spectacular falls to the downhill side. The trail had been obliterated by the deep snow and we couldn't find the cabin. With evening coming on we decided to make camp. We were tramping the snow down with our

skis to make a flat spot for our tents when we heard voices. A group of Seattle Mountaineers was at the cabin which was just a couple of hundred yards up the hillside. It took no time for us to decide to leave our snow camp and move into a nice warm cabin with them.

The next morning we put on our skis and headed for the mountain. After some pretty steep climbing, we came to a broad, flat area that went uphill more gradually. It was the Des Poilus Glacier. After skiing up the glacier for a while, we heard the roar of an avalanche coming off one of the mountains beside us. We all skied as fast as we could across the snow away from the sound. It was far enough away that it didn't get to us, and because of low visibility, we never saw the avalanche.

We were naive about what we were doing. We were travelling across the glacier and though we had climbing rope, we were not roped up. If one of us had fallen through a snow bridge into a crevasse, we could have had serious problems and possibly, a disaster. When the slope became much steeper, we dug a hole to check the snow quality. Just below a hard crust the snow had the consistency of sugar with no cohesion at all – a prime condition for an avalanche. It was too dangerous to proceed, so we retreated down the glacier to find a place to camp for the night. We found a deep wind trench around a large rock. What a good place to put our tents, down out of the wind. Well, our tents stopped the wind around the rock alright, but then the snow fell onto the tents all night so our tents got smaller and smaller.

It got very cold that night. Loren put his ski boots in his sleeping bag and put his wool cap over his knees. The next morning his boots still had snow on them. We had made a slight mistake while packing up at the cabin and had left almost all of our food behind. So we had stewed apricots for dinner and then again for breakfast. Well, we had survived the night, and we decided to try a different route up the mountain. Above a flat spot we came to a very steep pitch, but the snow was better, so we proceeded, one at a time, up the pitch. While waiting my turn, I pushed my ski pole down. It went through the snow for three feet and then fell through into air. We were standing on a snow bridge over the bergschrund, a huge crevasse where the glacier had pulled away from the rock. Again luck was with us and the snow bridge held. Above that area the snow was very rough and wind packed, so we took our skis off, kicked steps in the hard snow, and climbed to the top using our ski poles for balance in the wind.

When we got back to where our skis were and we're putting our skis on, one of Bill Russan's skis got away and started down the mountain. Bill made a headlong dive and caught it by the very back tip. As far back in as we were, the loss of the ski would have caused serious problems. Our luck had held again.

www.friendsofyoho.ca

This page was created using **Nitro PDF** trial software.

To purchase, go to <http://www.nitropdf.com/>

Cont'd from page 3

On the way down the mountain we met the Seattle Mountaineers group coming up. They didn't say so, but we wondered if they had come our way thinking we might need to be rescued.

When we got back to the cabin, we learned that Vidas, one of the guides over at the Stanley Mitchell Cabin, had broken his leg, so we skied the six miles over there planning to help get him out on the toboggan. On our arrival the other guides told us that the toboggan was only for paying guests. Vidas had skied out on his broken leg. I guess the break wasn't too bad.

We spent that day following the paying guests up another glacier and skiing down.

While we were skiing back to our car, we noticed that the Seattle group was following far behind us. We were pretty close to the gate and the cars. One lady in the group was a very strong hiker and was gaining fast. Loren looked over his shoulder and said, "Oh, my God, there she is." Loren had a thing about women doing something better than he did, so when she came up along side us, Loren put on a burst of speed. They went neck and neck and got to the gate at the same time, so Loren's honor was saved.

We spent a day skiing at Lake Louise, Janet and Mary drove from Kalispell to meet us. After a stop to swim at Radium Hot Springs, we came on home. As I think back on it, I feel that we were all very lucky.

Friends Support Children's Wish Foundation with \$10,000.00 Donation



The Children's Wish Foundation of Canada
La Fondation Réves d'enfants

8/31/2011

The Friends of Yoho Society
PO Box 100
Field, BC V0A 1G0

Dear Sir or Madam,

On behalf of The Children's Wish Foundation of Canada, thank you for supporting our mission of granting wishes for children coping with life-threatening illnesses.

It is difficult to put into words the excitement and joy these children express when their wishes come true. Children coping with life-threatening illnesses face challenges many of us can't imagine. Receiving a wish allows these special children and their families to take a break from the daily trials of hospital visits, treatments and pain.

Whether a child dreams of a new computer, meeting a celebrity or a trip to a magical place, The Children's Wish Foundation turns hope into reality thanks to the generosity of people like you.

Each year thousands of Canadian children between the ages of three and 17 are diagnosed with a life-threatening illness. We are dedicated to granting an exceptional wish to each one of them.

Since our inception 26 years ago, Children's Wish has granted more than 16,500 wishes for children and their families and fulfills approximately 900 wishes annually – granting nearly 3 wishes every day – each being an individual adventure carefully structured to meet the needs of that particular child. We have never refused a wish to an eligible child. These accomplishments have been made possible because of support like yours.

In the name of all of our wish children, we extend a heartfelt thank you to you and everyone involved in helping us continue our tradition of making dreams come true.

With every best wish,

A handwritten signature in black ink, appearing to read "Jason Evanson".

Jason Evanson
Chapter Director

Alberta & N.W.T Chapter
271 - 339 50 Avenue SE, Calgary, AB T2G 2B3
Tel: 403-265-9039 Fax: 403-265-1704
www.childrenswish.ca



On June 24th the Canadian Pacific Railway generously donated the use of their steam train to the Friends of Yoho in celebration of Yoho National Park's 125th birthday. The Friends sold tickets on train rides from Golden to Field and Field to Banff. From the profit of train ride sales, the Friends were able to make a donation to the Children's Wish Foundation.

Thank you Canadian Pacific for your donation to the Friends.

www.friendsofyoho.ca

This page was created using Nitro PDF trial software.

To purchase, go to <http://www.nitropdf.com/>